



The Darling Point Society

HAPPY TWENTIETH BIRTHDAY TO US !

2019 is the Darling Point Society's 20th Anniversary Year.
Below is a Letter from Barbara Rooke founder of the Society:

"As the founder of the Society I feel immensely proud of what we have achieved. I am so grateful for all the hard work that has been put in by those who guided me, those who worked with me and those that have come after me; in particular Charlotte Feldman, who has been a stalwart president, spearheading many successful campaigns and engendering a friendly and inclusive atmosphere amongst our members. There have been and remain many diligent workers on her committees and they all deserve high praise.

There are also a significant number of individual members who have generously given support to Charlotte and her various teams' initiatives to preserve heritage and curb over development and who are currently fighting to preserve local open green space. State and local government are always needing to be encouraged to be accountable to constituents.

These endeavours have borne considerable fruit and the Society deserves the respected voice it has earned at Woollahra Council and in the Darling Point community and elsewhere when supporting the campaigns of our neighbours.

I am confident the Society will go on from strength to strength - because it is needed - and new faces to keep up our efforts are more than welcome. As residents we are but caretakers of this beautiful and historic district, we love living on this magnificent peninsular with its harbour vistas, but its very desirability puts it under constant threat.

Our job remains to preserve and protect what is lovely of what is left for future generations to enjoy as we have."

Barbara Rooke
Founder and Life Member

Thank you Barbara for without you there would likely not be such
a strong community involvement in our peninsula.

Darling Point Society 2019 Newsletter

Darling Point is made up of high rise, and smaller scale residential buildings in tree lined streets.. The Darling Point Society sees its mission as the preservation of what is unique about this exceptional suburb. Our peninsula is forever under threat of losing its parks, its waterfront and heritage buildings. The battle goes on to preserve the beauty which is constantly under threat from unwelcome initiatives. We have again fought to preserve green spaces and heritage and have made numerous submissions and objections against loss of green space, development, traffic and infrastructure issues.



Please consult the notice board opposite Richie's coffee shop and check our new interactive website for updates and upcoming events www.darlingpointsociety.com.au Our email is: darlingpointsoc@hotmail.com.

MEMBERSHIP RENEWAL

Membership runs on a calendar year and we encourage you to renew your membership of the Society for 2019 and beyond. Reminders will be sent out early in 2019 but if you join or renew now, your membership will run until December 2020 and beyond depending on your chosen option of 1 or 3 years individual or family membership.

Options are:

1 year single member \$30, 1 year family membership \$50

3 years single \$75, 3 years family \$95

Concession membership \$10

Shop/School/Business \$100

Please remember to include your email address when joining on line or by email.

Our postal address is P.O Box 1131, Edgecliff NSW 2027.

PRESERVATION OF HARBOUR FORESHORE AND SEAWALL (see newsletter 2017)
OPENING OF SEAWALL VOTED BY WOOLLAHRA COUNCIL



Despite a wall of petitions and submissions to the Minister for Environment and the Minister for Heritage, our plea to stop WMC from cutting a 6 metre opening in the heritage listed seawall, is still at a stalemate. WMC is determined to open the wall for dogs and children to swim. We maintain that it is a dangerous spot because it is subject to tidal movements including the high tides (up to 2 metres by 2100) and sharks regularly patrolling the Bay. Our goal is to prevent illegal development and encroachment on the harbour foreshore and to have the heritage listing of the sea wall extended past Elizabeth Bay, onto the Botanical Gardens and beyond. For more details of our opposition request a copy of our Newsletter 2018

THE FIGHT FOR PRECIOUS GREEN SPACE CONTINUES
SKATEBOARD PARK IN RUSHCUTTERS BAY PARK

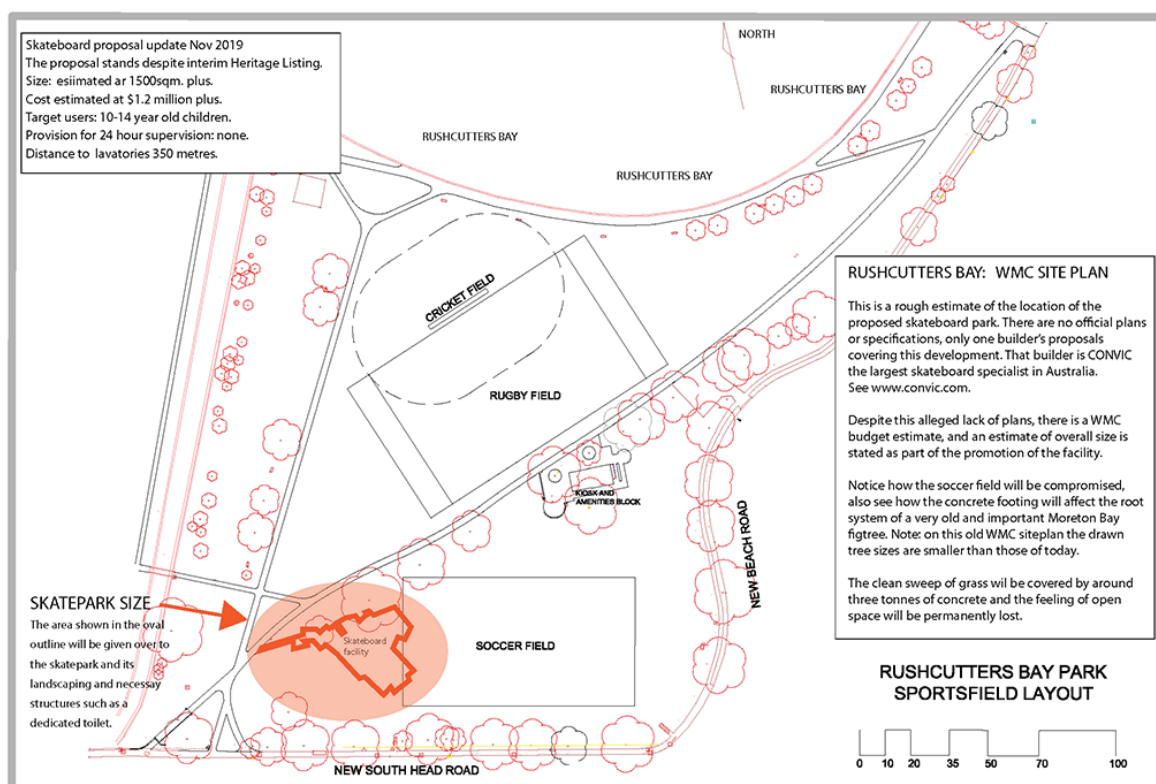


The proposal to build a skateboard park facility in Rushcutters Bay Park alongside the canal was defeated in 2017 due to a large majority of residents opposing the project. The basketball court was scrapped as well. On 15 October 2018 Woollahra Council Finance Community voted to construct a skateboard facility in another part of Rushcutters Bay park disregarding objections, petitions and a NO email response to a community survey. The new area is close to the main road and the football pitch. We publish this list of reasons against building the skatepark

:

- Disruption to wild life (birds, small marsupials)
- Concrete damaging ancient tree roots due to compaction of root plates, hydrodynamics and lack of air and moisture
- Non resident park users (Edgecliff, Paddington, Darlinghurst, Kings Cross)
- Cost of building and maintenance at ratepayers expense
- Noise impact close to 63 dB exceeding the maximum 45-60 dB issued by road traffic authorities
- Democracy – Local public consultation ignored
- Location – other locations would be more suitable (Moore park, Centennial Park, Lynne Park, Domain car park)
- Management of facility (no planned supervision)
- Cost of building approximately \$1.4m
- Ongoing maintenance and supervision (security)
- Insurance (public liability and damage)
- Potential undesirables – self explanatory

We also argued that City of Sydney has already Heritage listed its part of Rushcutters Bay park and the seawall past the canal, so it would make sense that Woollahra should also list its part of the same park as they share a common history which possibly includes some Aboriginal history as well. A Heritage Impact statement must be filed by WMC before going ahead with their plan. See map below.



Although CONVIC has effectively been awarded the \$1.2m contract (according to WMC) it has been impossible to obtain any real site plans from Woollahra Municipal Council (WMC). Council has indicated it will take up 1,225 sq.m. of open green land. If the slab and piers are taken into account with a complex superstructure it may result in 1 cubic metre of concrete required per 1 sq.m. This is estimated to weigh close to 2,940 tons when considering one cubic metre of concrete weighs 2,400 kilos (slightly over a ton) times 1,225 or equal to the weight of 1,940 cars.

We are not quantity surveyors == but common sense tells you we have;

- no scaled and detailed plans, or elevations
- no soil tests, no arborists reports
- no base rock definitions no .
- no itemised labour or concrete costs
- no Environmental Impact Study.
- no specified concrete standards
- no local water table analysis
- no recognised Australian building standards

A GIPA (Freedom of Information) request has been filed by Mr Andrew Woodhouse asking WMC to release information on the planned facility to clear any suppositions that may have arisen from their determined lack of information.

We all agree that Youth recreational facilities are needed in the East, and the Society recommended 9 other suitable sites in the Woollahra municipality where a skate facility could be built, only to be ignored by WMC who are determined to go ahead with their plan to use Rushcutters Bay park. We feel that WMC should take notice of recreational facilities happening in the west such as Youth Recreational Centres where young people a large variety of physical activities in a safe and friendly facility.

The Society gathered a petition against building the facility with 1,600 signatures and this was tabled in Parliament by the Hon Gabrielle Upton on 26 June 2019. A further 400 NO emails were gathered against building the facility.

On 29 January 2019 a 12 month Interim Heritage Order was issued by the then Office of Environment and Heritage (OEH) which was disbanded after the State elections and replaced by the Office of Heritage (OH). This IHO is valid until 20 January 2020.

On 8 July 2019 WMC voted unanimously to uplift the IHO and issued a submission to the OH. Many submissions were received by the Minister for Environment Mr Peter Stokes MP, the Minister for Crown Lands Mr Adam Marshall, and to the Minister for Local Government the Hon Shelley Hancock MP.

Please see below Notice of Motion of Ordinary Council Meeting of 8 July 2019:

“Notice of Motion – Rushcutters Bay Park Interim Heritage Order:

E. Writes to the Minister for Energy and Environment, the Hon. Don Harwin, and to the Chief Executive Officer of the Office of Environment and Heritage requesting the Interim Heritage Order be lifted on the grounds that the heritage impact of the proposed Youth Recreation Facility in Rushcutters Bay Park will be addressed in the Review of Environmental Factors under Part 5 of the Environmental Planning and Assessment Act 1979”.

For the motion: 13 councillors voted from a total of 15 – Against NIL

The Office of Heritage (HO) upheld the IHO until their meeting of 2 October 2019 when a decision was expected to uphold the IHO or issue a lasting Heritage Order. The OH deferred a decision for 21 days and then for another few weeks pushing it to their December meeting.

To date we are still awaiting a favourable official Heritage Order for Rushcutters Bay Park and Yarranabbe Park together. The two parks were once one and were both part of the land reclamation and park creation works of 1897. (heritage report by Heritage Solutions, Ari Anderson, available). WMC have on several occasions reiterated their determination to go ahead with their plan despite intense opposition from residents.

WMC claims that their public consultation returned a larger number of people for the facility than our petition and the NO campaign put together. We know that Clr A. Marano used several Paddington schools to facilitate his campaign to push the plan forward.

We are now seeking National Heritage listing and further previously unknown information has come to light this week regarding the Rushcutters Bay Park site's indigenous significance.

We published this list of reasons against building the skatepark :

- Disruption to wild life (birds, small marsupials)
- Concrete damaging ancient tree roots due to compaction of root plates, hydrodynamics and lack of air and moisture
- Non-resident park users (Edgecliff, Paddington, Darlinghurst, Kings Cross)
- Cost of building and maintenance at ratepayers expense
- Noise impact close to 63 dB exceeding the maximum
45-60 dB issued by road traffic authorities
- Democracy – Local public consultation ignored
- Location – other locations would be more suitable (Moore park, Centennial Park, Lynne Park, Domain car park)
- Management of facility (regular supervision)
- Cost of building approximately \$1.2 plus plus
no detailed estimates have been released
- Ongoing maintenance and supervision: not yet allowed for
- Insurance: public liability and damage
- The park will be a magnet for undesirables – self explanatory
remember the age range is (at the moment) 11-14 years

Loss of green space is a deprivation to residents of peaceful green enjoyment

We also argued that City of Sydney has already Heritage listed its part of Rushcutters Bay park and the seawall past the canal, so it would make sense that Woollahra should also list its part of the same park as they share a common history which possibly includes some Aboriginal history.

CONTROVERSIAL STATEMENTS BY CLR A MARANO

Offensive comments made by Clr A Marano have been published in the press and heard on the morning radio show. Clr Marano started at the Council meeting of Monday 24 September 2018 calling the members of the Society “parasols and crinolins...” thereby inferring that all Darling Point residents are from another century then followed on with remarks on 15 July 2019 in an interview with Sue Williams (SMH) inferring that all residents are old and won't live another 10 years
SMC Sue Williams 15 July 2019.

The Society has filed several complaints to the CEO of WMC Mr Gary James whose single reply included: “..Clr Marano has apologized to council...”

Is that good enough?

WOOLLAHRA HAS A NEW MAYOR AND A NEW DEPUTY MAYOR



Councillor Susan Wynne was elected on 23 September 2019 as the new Mayor for Woollahra and Richard Shields as Deputy Mayor.

Extract from Susan Wynne's election speech:

"Having been elected to Council in 2008 and being the Mayor in 2011/12, it is an honour and a privilege to be the Mayor again. I am looking forward to working with my fellow councillors and the Deputy Mayor, Richard Shields over the next 12 months. Being the Mayor of Woollahra is a responsibility I don't take lightly and I am committed to doing everything I can to represent and serve you well.

WOOLLAHRA COUNCIL LIST OF COUNCILLORS 2019

	DOUBLE BAY	Toni Zeltzer, Mark Silcocks, Richard Shields	
	BELLEVUE HILL	Isabelle Shapiro, Nick Maxwell, Lucinda Regan	
	COOPER	Anthony Marano, Luise Elsing, Megan McEwan	
	PADDINGTON	Peter Cavanagh, Matthew Robertson, Harriet Price	
	VAUCLUSE	Mary-Lou Jarvis, Claudia Cullen, Susan Wynne	

DOG SHOW - Paws4aCause

Rushcutters Bay Park Sunday 27 September 2019

The Dog show was held by Rotary Kings Cross and many different breeds took part. Below is the picture of the Finale, a stylish female called Lucie-Lu pictured below with her owner Mrs Sally McDougall of Darling Point.

It was a fun event for all, doggies got hreats, owners got portraits of their dogs, much laughter was had at the Tail Wagging Competition , and the fancy dress parade for kids under 10 with dogs was most enjoyed by all.



INCREASE IN CRIMINALITY IN DARLING POINT

The Society was made aware of an increase in criminality in Darling Point by some residents. This was reported to the Hon Gabrielle Upton for her support in contacting the Local Area Command on the matter.

NEW MCLEAN STREET AND NEW SOUTH HEAD ROAD

The left turning lane from New Maclean St at the intersection is no longer safe to use for going ahead, as the traffic police have been busy booking infringers. The traffic build up at that intersection is causing frustration especially at peak morning and mid afternoon times.

This was mentioned to the Hon Gabrielle Upton to help find a solution to the ongoing problem. A right turn orange arrow was suggested or a special permission to cross at certain times only

Traffic engineers alert: assistance here please!!

UPDATE ON DARLING POINT BUILDING WORK

I have recently noticed a new modern building in Hampden Ave. What is good about the new building on Hampden Ave are its interesting curves and its unity of composition. I believe it is based on the principles seen in the work of New York architect Richard Meier: his signature is the use of ultra-bright white with strong geometry. In a strong differentiation of texture, the roof area is covered with small glossy white tiles with a definite pattern imposed by their interlocking shapes. Hampden Avenue is a short street made up of 1930s buildings, relatively “quiet” structures with recessive colour schemes. It will be interesting to see how it settles into its position in the street. The architects are MCK, the builders are Horizon.



The other significant renovation is 19 Etham Avenue which I call “ten past ten” after the time shown on the antique clock face near the front entrance. The façade has been remodelled by traditional architect Michael Bell who has applied neoclassical mouldings to the renovated frontage. This now includes a formal front entrance flanked by Doric pilasters and the mouldings are carried onto the new garage. Most passers-by would see this as a successful and witty update to a somewhat bland 1930s cottage.



FERRY SERVICES DARLING POINT

The ferry service at Darling Point Wharf is proving extremely popular with commuters to Circular Quay and back. It is hoped we can have a more frequent service including a route to Watsons Bay and Taronga Zoo.

LIFT AT EDGECLIFF SHOPPING CENTRE

The new lift at Edgecliff Station was inaugurated onWe are grateful to the Hon Gabrielle Upton for working so hard to have a lift installed at Edgecliff Station which is a great improvement for many locals, both young mothers with prams and less agile travellers.

ANNUAL DINNER AT THE STOREHOUSE RESTAURANT – VIBE HOTEL RUSHCUTTERS BAY

Our annual dinner this year was held at the Vibe Hotel, restaurant. The spacious restaurant looks out onto Rushcutters Bay Park and offers a relaxing setting. It was well attended by members and friends and the evening was a most enjoyable occasion.



LINDESAY AFTERNOON TEA

The annual Afternoon Tea at Lindsay Manor on 27 July 2019 was again a most successful afternoon.

Dave Sharma MP was our special guest and the assembly was happy to have the opportunity to talk with him informally. Dave Sharma reiterated his support for NO SKATEPARK in Rushcutters Bay Park.

We were honoured to welcome many guests and we wish to thank the wonderful guides Annette and Bill Blinco who took many tours around the house.

Among the famous guests were a number of community representatives.

We thank the duo from the Woollahra Philharmonic Orchestra who played classical pieces in the Gazebo to entertain the guests with great professionalism. We wish to acknowledge the Woollahra Philharmonic Orchestra for their work in the community and their commitment.

We thank the committee for providing a wonderful array of treats and dedicated helpers Elle and Honor. We thank the duo from the Woollahra Philharmonic Orchestra who played classical pieces in the Gazebo to entertain the guests with great professionalism. We wish to acknowledge the Woollahra Philharmonic Orchestra for their work in the community and their commitment.

We thank Dave Sharma MP for attending the Tea and speaking to a large number of the assembly.



BREAKFAST BY THE SEA

The popular Breakfast by the Sea was held on 15 September 2019 at the RANSA sea deck was well attended. Beautiful weather and wonderful setting made the event truly a great forum for discussing issues. We thank RANSA for graciously making the sea deck available to our Breakfast.



STALL AT DOUBLE BAY SPRING FAIR 3 NOVEMBER 2019 – BUBBLES IN THE AIR

The Society and the SOS Rushcutters Bay Park group have joined forces to fight the WMC's plan and on 3rd November 2019 held a stall at the Double Bay Spring Fair which was most successful in bringing awareness of WMC's plan to deprive the residents of their beautiful green space.

A truly entertaining event with music and 300 stalls of every imaginable variety attracted a large amount of visitors. From camels and ponies to puddings and artistic jewellery every age group had a wonderful afternoon. Ultra modern bubble machines blew bubbles everywhere. Why were these clever bubblers not invented earlier?

DPS and SOS Rushcutters Bay Park got together to set up a stall at the Double Bay Spring Fair. The stall looked beautiful thanks to Max Herford's clever artwork and attracted much attention.

Many younger people passing by signed the petition discrediting statements made to the effect that only "old" people who will be dead in ten years are against the facility built in the park.

OUR STALL IN BAY STREET

The fair was extremely colourful and varied – one could buy a great variety of products going from traditional puddings to dog grooming products and furniture made from palm fronds and bark, portraits and racing cars.

The Green Girls attracted a lot of attention, distributed leaflets and collected signatures for a petition. We collected 600 signatures against the skate park in 6 hours!



THE VOICE OF YOUTH COMPETITION 2019 HELD AT ASCHAM

The heat was a first round Heat of the Voice of Youth in the Eastern Suburbs of Sydney. There were three sets of heats on that evening from 4.30 pm to 6.00 pm, then from 6.00 pm to 7.30 pm and finally 7.30 pm to 9.00 pm. In all there were 16 heats of approximately 10 students in each heat, so 160 students with their parents and teachers and friends attended at a busy evening for the Voice of Youth. Students from Ascham took part in some of the heats and they did very well with several students winning or being runners up.

The Vice President of the Darling Point Society - Gary Newton attended at the heat as an adjudicator. He reported that the quality of the speaking was very good and that the school had provided excellent facilities to allow for a very successful first round of the 2019 Eastern Suburbs Voice of Youth.

THE PADDINGTON GREENWAY AND RUSHCUTTERS CREEK – HERITAGE LISTED CREEK

There is finally some good, positive news for our local environment. In July, Woollahra councillors voted unanimously to support a motion for the Paddington Greenway, a proposal that will see the old creek that used to meander naturally from Trumper Park to Rushcutters Bay 're-wilded', where possible, to create a natural green corridor.

Alongside the revitalised creek will be pedestrian access and cycleways which will not only provide local access to enhanced green space for residents, but help in the plan to link up parks and cycleways throughout the city.

The proposal was developed by landscape architecture students from the University of Technology who were asked to explore ways in which Rushcutters Creek could be rejuvenated. Students spent time studying the flow of water, tides and cultural history of the park before devising a plan that moves away from a rigid canal like structure back to a more natural water course. The Rushcutters Bay Stormwater Channel is actually listed on the State Heritage register as one of the first nine purpose-built stormwater drains to be constructed in Sydney in the 1890's, and it is unclear how this part would be dealt with but, in general terms, the length of the creek from Trumper Park would see the removal of concrete in favour of renaturing with the reintroduction of wetland plants for water filtration and natural creek embankments.

Students, including Christina Kirkwood who grew up in Paddington, were especially keen to bring back beauty to this overlooked local water feature and to enthuse people reconnecting with nature by enabling them to follow the creek to where it naturally spills out into Rushcutters Bay.

Projects such as the Paddington Greenway address the Greater Commission of Sydney's plan to enhance waterways and green space throughout the city in the formation of a Green Grid network which connects parks and open spaces across Sydney. Aboriginal settlements are known to have existed in and around the creek flowing down to Rushcutters Bay providing a bounty of food.

Funding for this project is currently being explored.

Income and Expenditure for Year Ending 30 June 2019						
				2018-19		2017-18
Income:		NOTES				
Membership	Current Yr		1615.00		2050.00	
	Transfer from Prior Yrs		1430.00	3045.00	1980.00	4030.00
Interest	Term Deposit & Cheque	1		126.78		122.27
Donations	Various	7		1970.00		415.00
Other	Raffle	2		2320.21		1590.00
	Total Income			\$7,461.99		\$6,157.27
Expenditure:						
Insurance	- general liability	3		891.00		880.00
	- Association liability					0.00
PO Box, Postage, Telephone & Admin						
Web Site		4		500.01		0.00
Events - Lindesay		5		335.65		794.02
AGM Expenses		7		2018.42		1731.71
General Expenses		6		147.80		619.34
Filing Fees Donations, Other		8		975.80		1332.60
Publications				1500.00		0.00
Reports				4700.00		
	Total Expenditure			\$11,068.68		\$5,357.67
Surplus / (Deficit) of Income over Expenditure				(\$3,606.69)		\$799.60
Accumulated Funds as at 30 June 2018						\$11,615.78
Surplus / (Deficit) of Income over Expenditure						(\$3,606.69)
Accumulated Funds as at 30 June 2019						\$8,009.09
NOTES to the Financial Statements						
1						
Interest Received from WBC Cheque Account 032-054 19-1603 = \$4.28 and Term Deposit 032-054 41-3050 \$122.50 totalled \$126.78 for year end 30 June 2019. Principal of \$742.55 was transferred from TD to Cheque Account.						
2,5,6						
The Lindesay breakfast raised funds of \$2320.00 from a raffle less costs of \$483.45						
3						
The Association Liability Insurance paid \$891.00 for Annual Cover 2018/19 year.						
4						
The Website costs of \$500.01 which is a part payment & to be completed 2020.						
7						
The AGM expenditure amounted to \$2018.42 being printing, hiring of venue, postage food/wine.						

Balance Sheet 30-Jun-19						
		Notes	2019-20		2018-19	
Assets						
Cash at Bank						
	- Current Account		2,948.87		5,874.89	
	- Unpresented Cheques		-			
	- Term Deposit	1	5,060.22		5,740.89	
	Total Assets			\$8,009.09		\$11,615.78
Liabilities						
Subscriptions in Advance			1,430.00		1,980.00	
	LESS Total Liabilities			\$1,430.00		\$1,980.00
	Total Equity			\$6,579.09		\$9,635.78
Equity is represented by						
Transfer to Accumulated Funds				(\$3,606.69)		\$799.60
Accumulated Funds				\$11,615.78		\$8,118.48
	Total Equity			\$8,009.09		\$8,918.08
	Cash At Bank includes Subscriptions in Advance					
			2018-19	\$0.00		\$975.00
			2019-20	\$715.00		\$1,005.00
			2020-21	\$715.00		\$0.00
				\$1,430.00		\$1,980.00
Notes						
	1	Term deposit 032-054 41-3050 - Balance 30/6/19				\$5,060.22
		\$742.55 transferred to cheque account with the interest of \$60.62 - total \$803.17				
	Amounts received as Subscriptions in Advance disclosed by Future Year.					
	Subscriptions in Advance have been offset against Accumulated Funds.					
2019-20 Subs	Current Year		\$715.00		\$975.00	
	Transfer from Prior Year		\$975.00	\$1,690.00	\$0.00	\$975.00
2020-21 Subs	Current Year		\$715.00		\$1,005.00	
	Transfer from Prior Year		\$1,005.00	\$1,720.00	\$0.00	\$1,005.00
				\$3,410.00		\$1,980.00
					Total Equity less Total Equity	
						\$1,430.00

THANK YOU

St Honore Bakery Edgecliff → → → →	LPG Bookkeeping Service, Bellevue Hill
Olah Jewellers	J A Hair & Beauty, Double Bay
Bar Latte, Edgecliff	Woollahra Council Library services and staff, Double Bay
Richie's Café, Darling Point	Woollahra History Centre, Double Bay
Reynolds Florist, Edgecliff	Lawrence Dry Cleaning Edgecliff
Lifestyle Homewares	

Thank you to the committee, a team of dedicated people who bring together their individual talent to make a multifaceted and efficient voice to Council and beyond.

PRESENT COMMITTEE

Charlotte Feldman	President
Gary Newton	Vice-President/legals
Robert Pompei	Public Officer/Secretary
	Treasurer
Jillian Blackall	Historical Officer
Rowena Hamilton	Special events
Jasmine Steel	Parks and Environment
Jean-Marc Feldman	IT and Website
	Membership Secretary
Luisa Skene	Special Events co-ordinator
Karin Olah	Public relations
Lorraine Jones	Membership Secretary
Max Herford	Communication
Marie-Anne Rance	Functions and events
Pia Larsen	Marketing

For further information - www.sdmf.org.au

The Darling Point Society Inc. PO Box 1131 Edgecliff NSW 2027
Please visit our new website for the latest updates of what is happening in Darling Point.
Email: darlingpointsoc@hotmail.com also on Facebook.